



Sony Ericsson

# Working Instructions

## - mechanical -



*Yendo, Yizo*

*W150, W150i, W150a*



## CONTENTS

<b>1</b>	<b>Exterior Views.....</b>	<b>4</b>
1.1	W150 .....	4
<b>2</b>	<b>Tools .....</b>	<b>5</b>
<b>3</b>	<b>Disassembly.....</b>	<b>6</b>
3.1	Battery Cover.....	6
3.2	Battery.....	7
3.3	Rear Cover Assy .....	7
3.4	Touch FPC Connector Mylar .....	9
3.5	Touch Front Cover Assy.....	10
3.6	Display and Main PBA .....	11
<b>4</b>	<b>Replacement .....</b>	<b>13</b>
4.1	Battery Cover.....	13
4.2	Rear Cover Assy .....	13
4.3	Touch FPC Connector Mylar .....	13
4.4	Display .....	13
4.5	Touch Front Cover Assy.....	14
4.6	Cobranding Label.....	15
4.7	Core Unit Label.....	17
4.8	Speaker Mesh .....	18
4.9	Camera Window .....	20
4.10	Speaker Holder Sponge.....	22
4.11	Speaker .....	23
4.12	Speaker Sponge .....	25
4.13	Liquid Intrusion Indicator .....	27
4.14	Camera.....	29
4.15	Touch IC Sponge.....	32
4.16	Proximity Sensor Rubber .....	33
4.17	Home Key Domesheet .....	34
4.18	LCM BtB Connector Sponge .....	36
4.19	Home Key .....	38
4.20	Power/Lock Key .....	40
4.21	Volume Key .....	42
4.22	Ear Speaker .....	45
4.23	Ear Speaker Sponge .....	47
<b>5</b>	<b>Reassembly.....</b>	<b>49</b>
5.1	Main PBA and Display .....	49
5.2	Touch Front Cover Assy.....	50
5.3	Touch FPC Connector Mylar .....	52



5.4	Rear Cover Assy .....	52
5.5	Battery.....	54
5.6	Battery Cover.....	54
6	Country of Origin Barcodes for Brazil/VIVO Labels.....	56
7	Revision History .....	57

***For general information about mechanical repair related issues, refer to  
1220-1333: Generic Repair Manual - mechanical***



# 1 Exterior Views

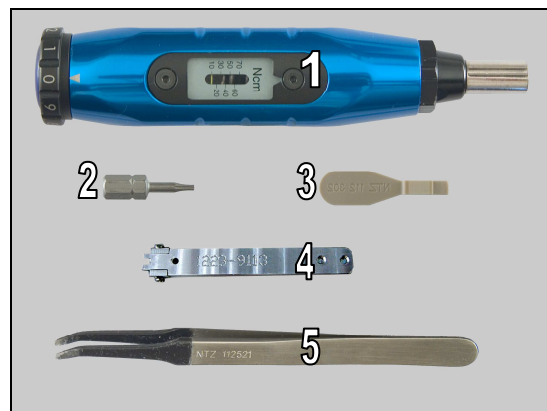
## 1.1 W150



## 2 Tools

### SPECIAL TOOLS

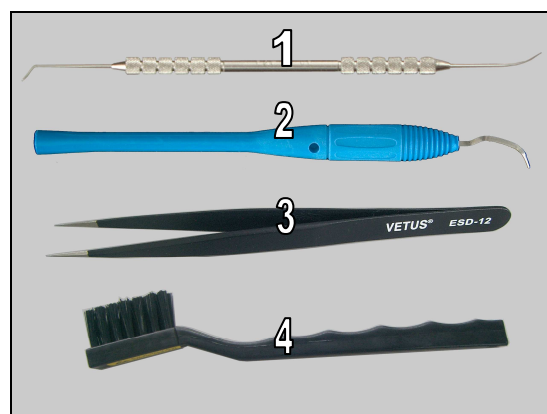
1. Torque Screwdriver
2. Bits (T5)
3. Front Opening Tool
4. Camera Removal Tool
5. Flex Film Assembly Tool



For part no's on the tools above, refer to the 'Tools Catalogue/Matrix'!

### STANDARD TOOLS

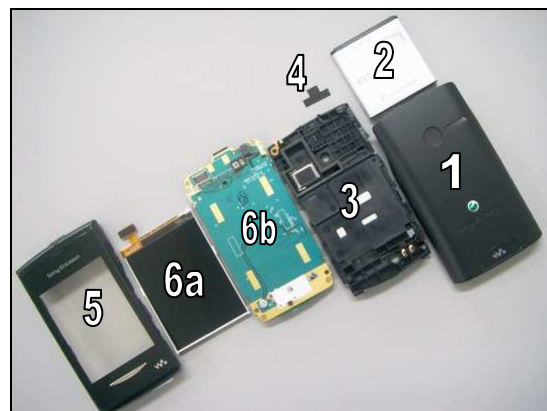
1. Dentist hook (needle-shape)
2. Dentist hook (curve-shape)
3. Tweezers
4. ESD cleaning brush



## 3 Disassembly

The Disassembly is done in the following order:

1. Battery Cover
2. Battery
3. Rear Cover Assy
4. Touch FPC Connector Mylar
5. Touch Front Cover Assy
6. Display(a) and Main PBA (b)



### 3.1 Battery Cover

Hold the phone as shown in picture.



Push the Battery Cover as the direction of the arrow in picture.



Lift the Battery Cover off to release it from the Rear Cover Assy.

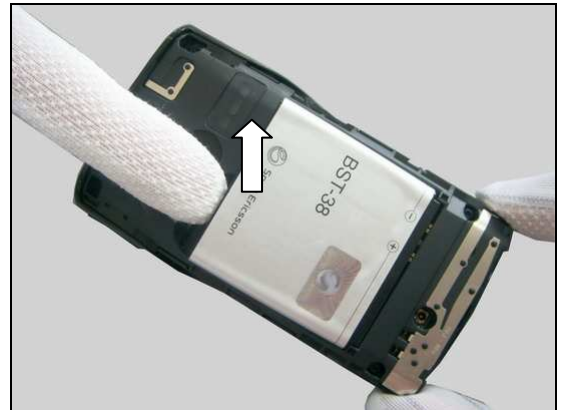




## Disassembly

### 3.2 Battery

Insert finger and raise the Battery.



Remove the Battery.



### 3.3 Rear Cover Assy

Remove the four screws by using Torx Bits T5.



Unsnap the bottom hook by using the Front Opening Tool.





## Disassembly

Unsnap one of the left hooks by using the Front Opening Tool.



Unsnap one of the right hooks by using the Front Opening Tool.



Unsnap the other left hook by using the Front Opening Tool.



Unsnap the other right hook by using the Front Opening Tool.





## Disassembly

Lift the Rear Cover Assy off to release the top hook.



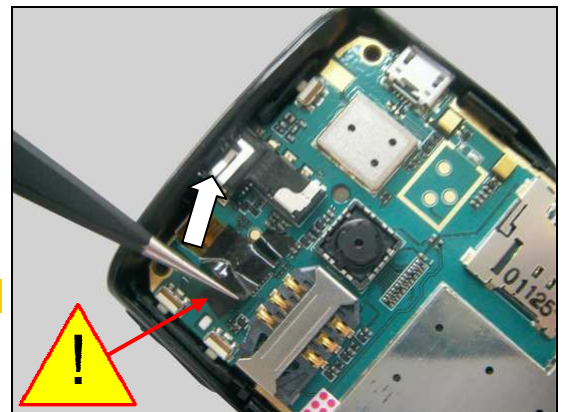
Remove the Rear Cover Assy.



### 3.4 Touch FPC Connector Mylar

Detach the Touch FPC Connector Mylar by using Tweezers.

**Be careful not to damage the components under Mylar.**



Remove the Touch FPC Connector Mylar.





## Disassembly

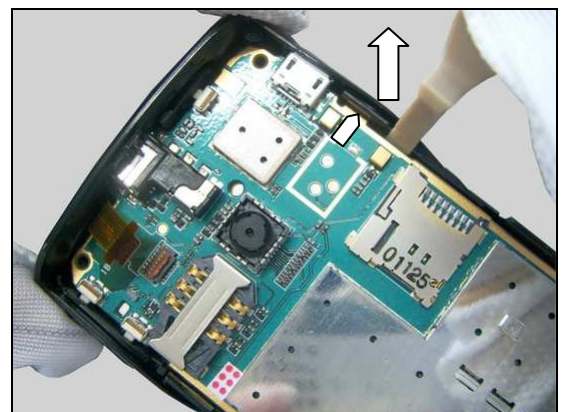
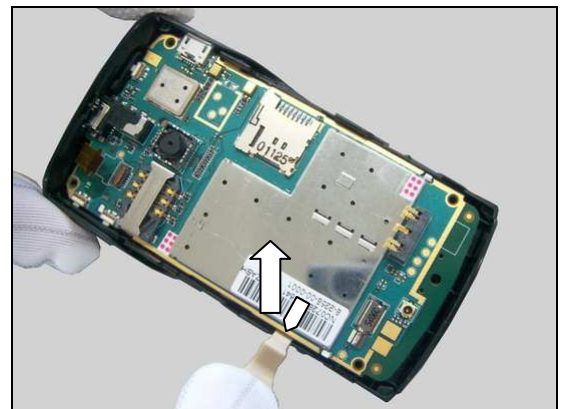
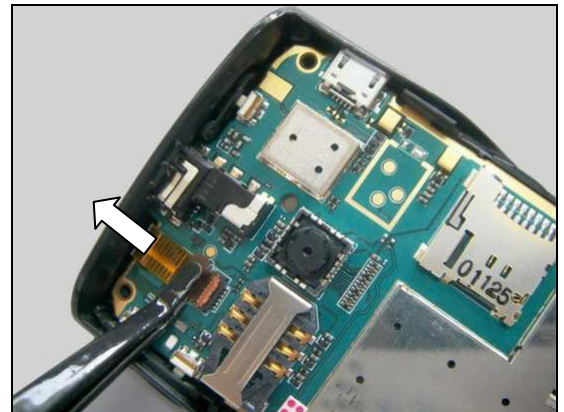
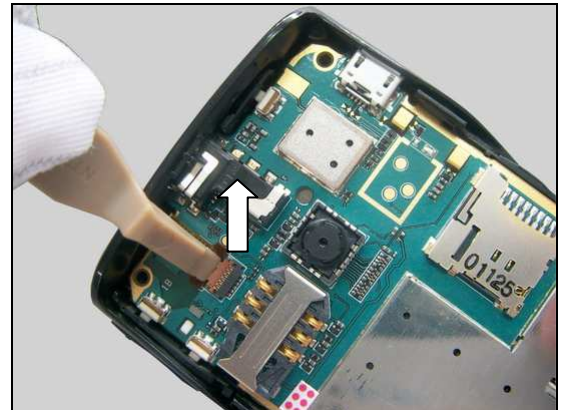
### 3.5 Touch Front Cover Assy

Unlock the Touch FPC Connector by using the Front Opening Tool.

Release the Touch FPC from the connector with the Flex Film Assembly Tool.

Insert the Front Opening Tool into the gap between the Main PBA and the Touch Front Cover Assy as pointer indicated in picture and gently loosen one side of the Main PBA from Touch Front Cover Assy.

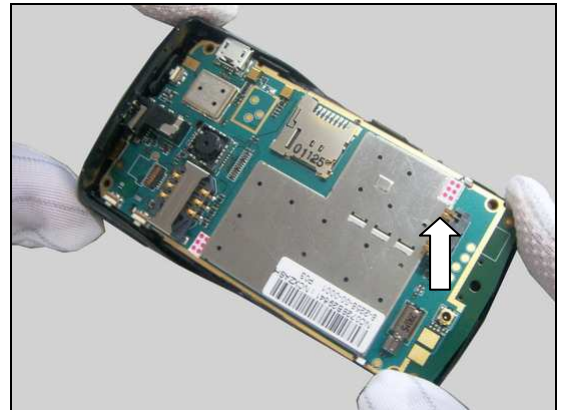
Insert the Front Opening Tool into this gap as shown to unsnap the hook as pointer indicated in picture and gently loosen the other side of the Main PBA from Touch Front Cover Assy.



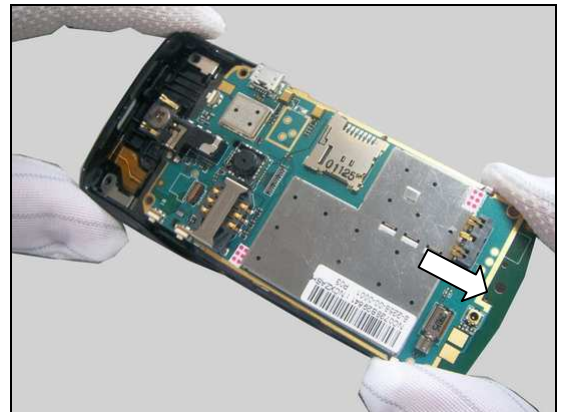


## Disassembly

Lift the Main PBA off and release it from the Touch Front Cover Assy.



Remove the Main PBA.

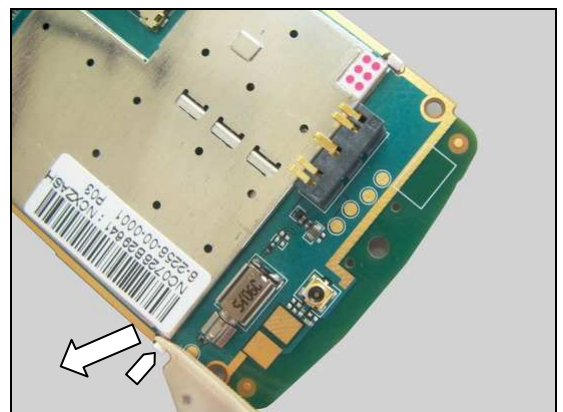


Separate them.



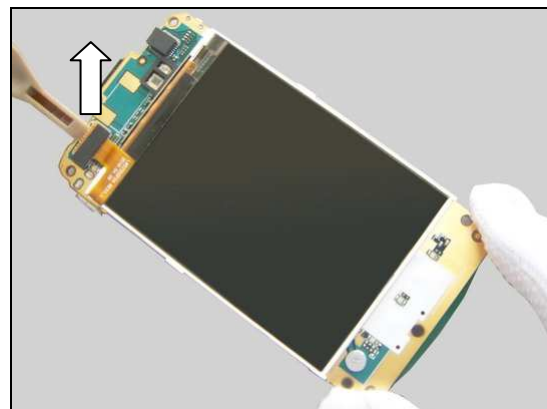
### 3.6 Display and Main PBA

Unsnap this hook on the Display by using the Front Opening Tool as pointer indicated in picture.

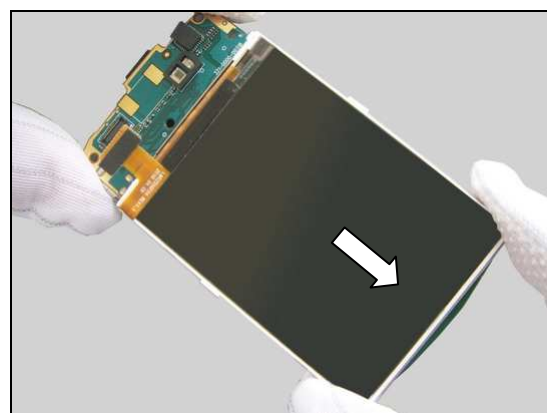


## Disassembly

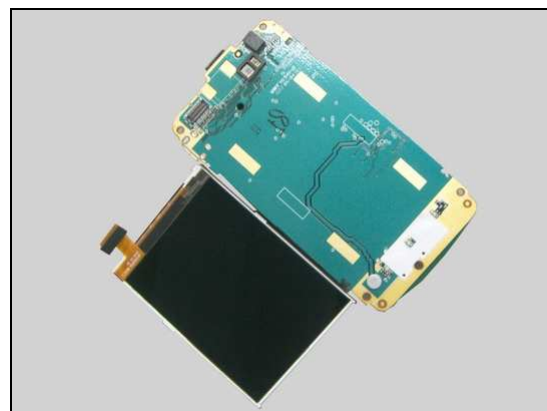
Turn over the Main PBA together with the Display.  
Disconnect the Display BtB connector by using the Front Opening Tool.



Release the Display from the Main PBA.



Separate them.







## 4 Replacement

### 4.1 Battery Cover

*Follow the 3.1 Disassembly Instructions!*

Prepare the new Battery Cover.

*Follow the 4.6 Installation Instructions!*

*Follow the 5.6 Reassembly Instructions!*

**Install a new Cobranding Label!**



### 4.2 Rear Cover Assy

*Follow the 3.1 – 3.3 Disassembly Instructions!*

*Follow the 4.10 and 4.11 Removal Instructions!*

Prepare the new Rear Cover Assy.

*Follow the 4.9, 4.11, 4.10 and 4.7 Installation Instructions!*

*Follow the 5.4 – 5.6 Reassembly instructions!*

**Install a new Camera Window and a new Core Unit Label!**



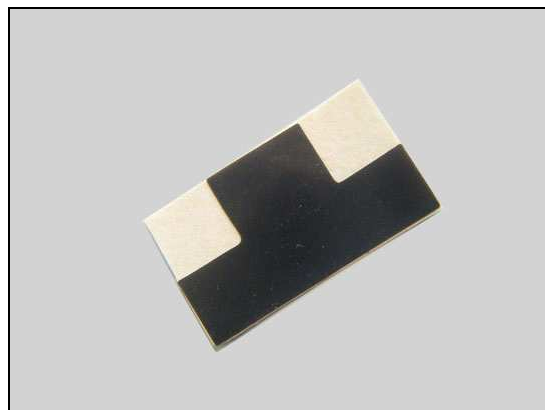
### 4.3 Touch FPC Connector Mylar

*Follow the 3.1 – 3.4 Disassembly Instructions!*

Prepare the new Touch FPC Connector Mylar.

*Follow the 5.3 – 5.6 Reassembly Instructions!*

**Touch FPC Connector Mylar cannot be reused!**



### 4.4 Display

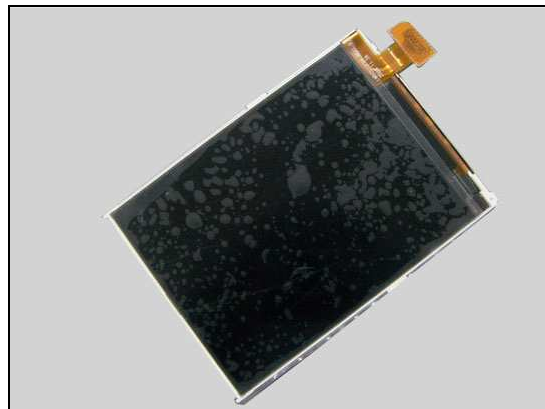
*Follow the 3.1 – 3.6 Disassembly Instructions!*

Prepare the new Main Display.

*Follow the 4.18 Installation Instructions!*

*Follow the 5.1 – 5.6 Reassembly Instructions!*

**Install a new LCM BtB Connector Sponge!**





## Replacement

### 4.5 Touch Front Cover Assy

*Follow the 3.1 – 3.5 Disassembly Instructions!*

*Follow the 4.19, 4.20, 4.21, 4.22 and 4.23 Removal Instructions!*

Prepare the new Touch Front Cover Assy.

*Follow the 4.23, 4.22, 4.21, 4.20 and 4.19 Installation Instructions!*

*Follow the 5.2 – 5.6 Reassembly Instructions!*

**Install a new Ear Speaker Sponge!**



## Replacement

### 4.6 Cobranding Label

*Follow the 3.1 Disassembly Instructions!*

Prepare the new Cobranding Label.

*Follow the 5.6 Reassembly Instructions!*

**Cobranding Label cannot be reused!**

#### REMOVAL

Insert the Dentist hook underneath the corner of the Cobranding Label to detach it.

**Be careful not to damage the Battery Cover.**

Peel off the Cobranding Label with the Flex Film Assembly Tool.

#### INSTALLATION

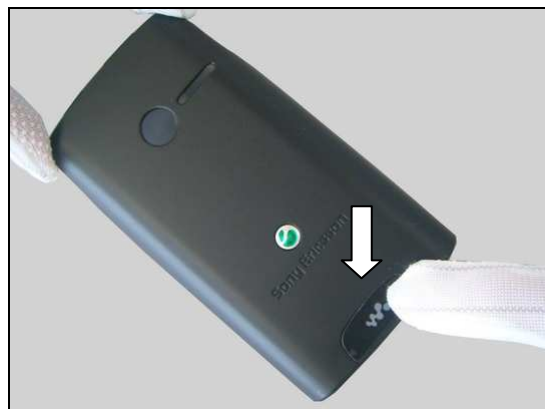
Attach a new Cobranding Label in its cavity as shown in picture.





## Replacement: Cobranding Label

Press to secure the solid attachment.



## Replacement

### 4.7 Core Unit Label

*Follow the 3.1 – 3.2 Disassembly Instructions!*

Prepare the new Core Unit Label.

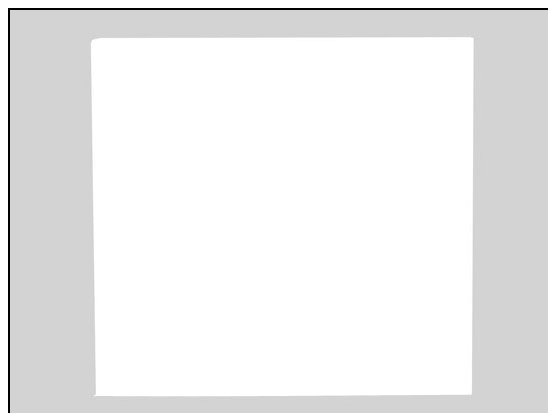
*Follow the 5.5 – 5.6 Reassembly Instructions!*

**Core Unit Label cannot be reused!**

#### REMOVAL

Read the old Core Unit Label and/or write the information into the 'LabelMake' program before removal.

Carefully remove the Label by using the Tweezers.



#### INSTALLATION

Check that the proper label format is loaded in the Zebra printer and write a new Label by using the 'LabelMake' software.

Attach the new Core Unit Label in place as shown.

**One label only is allowed!**



## Replacement

### 4.8 Speaker Mesh

*Follow the 3.1 – 3.2 Disassembly Instructions!*

Prepare the new Speaker Mesh

*Follow the 5.5 – 5.6 Reassembly Instructions!*

**Speaker Mesh cannot be reused!**

#### REMOVAL

Insert the Dentist hook underneath the corner of the Speaker Mesh to detach it.

**Be careful not to damage the Rear Cover Assy.**

Peel off the Speaker Mesh by using the Tweezers.

#### INSTALLATION

Attach a new Speaker Mesh in its cavity as shown in picture.



## Replacement: Speaker Mesh

Press to make it securely attached.



## Replacement

### 4.9 Camera Window

*Follow the 3.1 – 3.3 Disassembly Instructions!*

Prepare the new Camera Window

*Follow the 5.4 – 5.6 Reassembly Instructions!*

**Camera Window cannot be reused!**

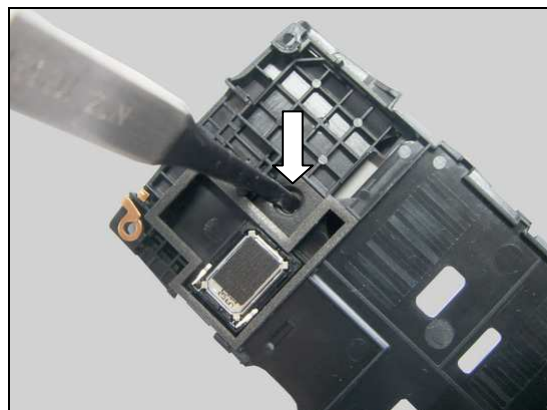
#### REMOVAL

Push the Camera Window from inside to detach it as shown in picture.

Remove the Camera Window.

#### INSTALLATION

Attach a new Camera Window in its cavity.



## Replacement: Camera Window

Press to secure the attachment.



## Replacement

### 4.10 Speaker Holder Sponge

*Follow the 3.1 – 3.3 Disassembly Instructions!*

Prepare the new Speaker Holder Sponge.

*Follow the 5.4 – 5.6 Reassembly Instructions!*

**Speaker Holder Sponge cannot be reused in case of the adhesive missing or failure!**

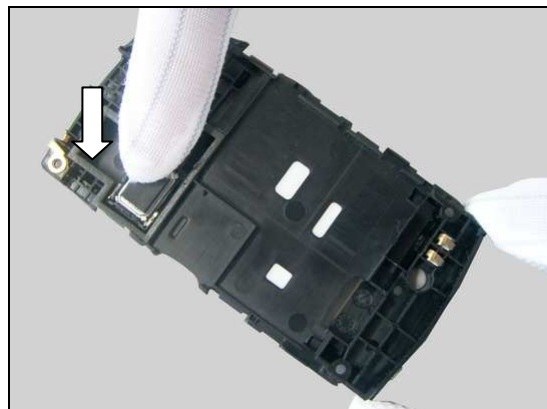
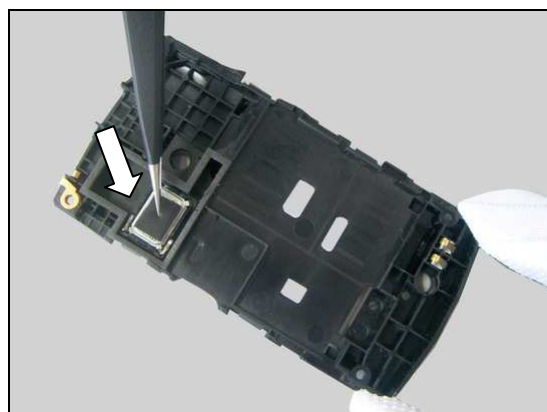
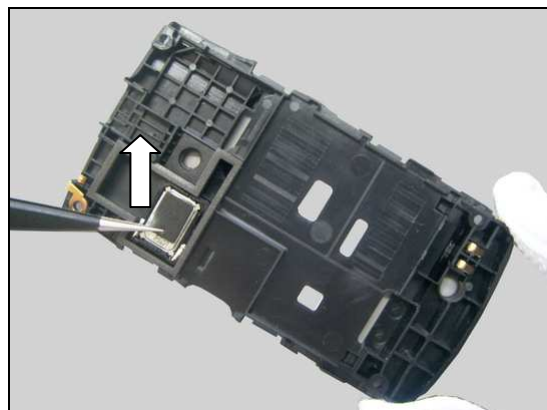
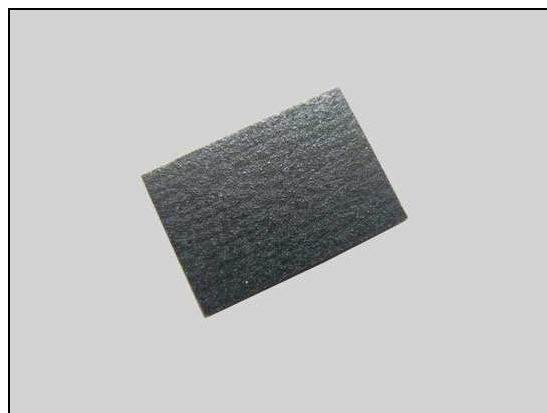
#### REMOVAL

Peel off the Speaker Holder Sponge from the Speaker by using the Tweezers.

#### INSTALLATION

Attach a new Speaker Holder Sponge onto the Speaker in the proper position as shown in picture.

Press to make it securely attached.





## Replacement

### 4.11 Speaker

*Follow the 3.1 – 3.3 Disassembly Instructions!*

*Follow the 4.10 Removal Instructions!*

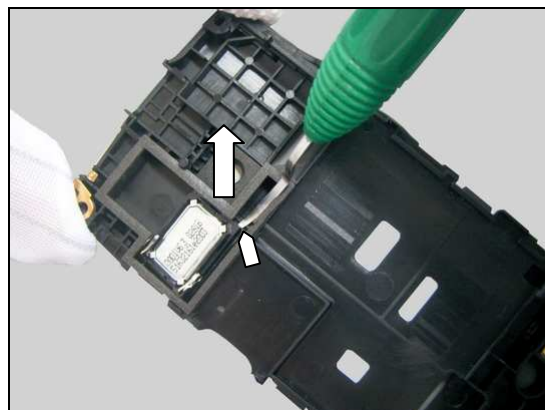
Prepare the new Speaker.

*Follow the 4.10 Installation Instructions!*

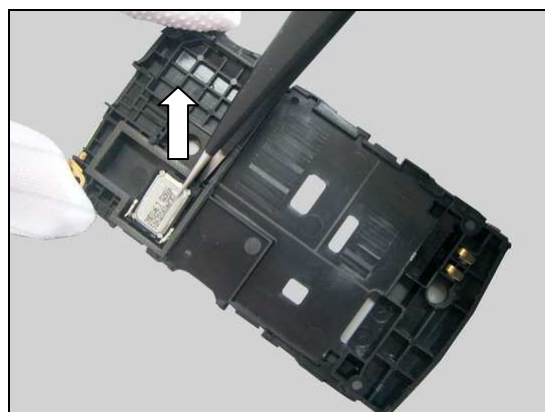
*Follow the 5.4– 5.6 Reassembly Instructions!*

#### REMOVAL

Insert Dentist hook at this corner and detach the Speaker from its cavity as shown in picture.



Remove it by using the Tweezers.



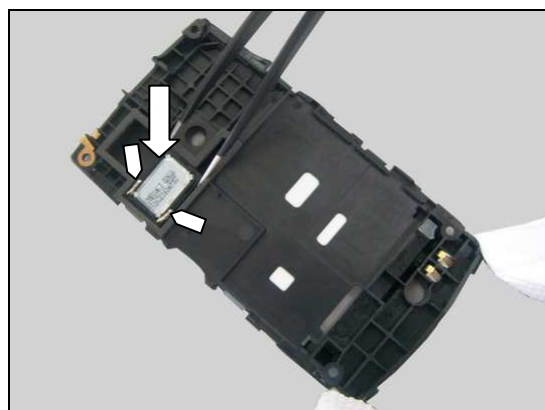
#### INSTALLATION

*Follow the 4.12 Removal and Installation Instructions!*

**Install a new Speaker Sponge!**

Place the Speaker into its cavity in the right direction.

**The speaker contact spring pins must be placed on the left side as pointers indicated in picture!**



## Replacement: Speaker

Press to make it securely attached.





## Replacement

### 4.12 Speaker Sponge

*Follow the 3.1 – 3.3 Disassembly Instructions!*  
*Follow the 4.10 and 4.11 Removal Instructions!*  
Prepare the new Speaker Sponge.  
*Follow the 4.11 and 4.10 Installation Instructions!*  
*Follow the 5.4– 5.6 Reassembly Instructions!*

**The Speaker Sponge cannot be reused!**

**Check the stickiness of the Speaker Holder Sponge before installation. Follow the 4.10 Removal and Installation Instructions to change a new Speaker Holder Sponge in case of the adhesive missing or failure.**

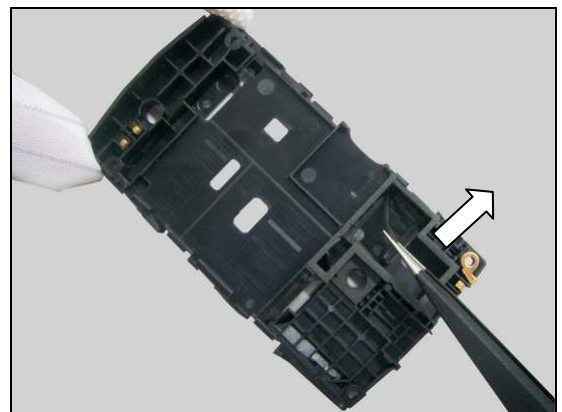
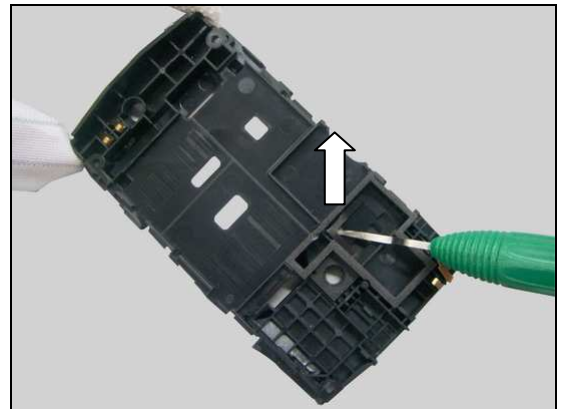
#### REMOVAL

Insert the Dentist hook underneath the residues of the old Speaker Sponge to loosen it.

Peel off it by using the Tweezers.

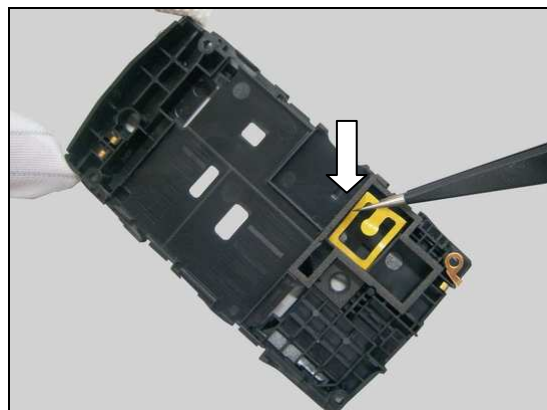
#### INSTALLATION

**Clean the residues of the old Speaker Sponge before installation!**

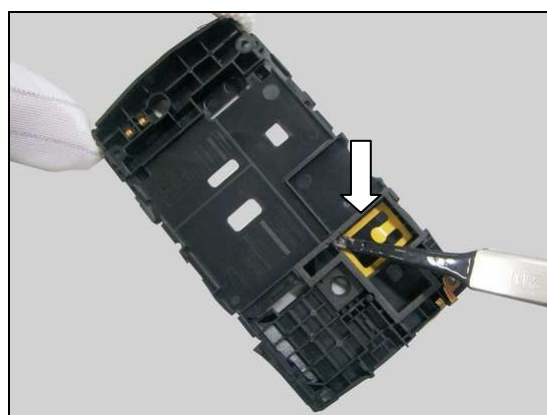


## Replacement: Speaker Sponge

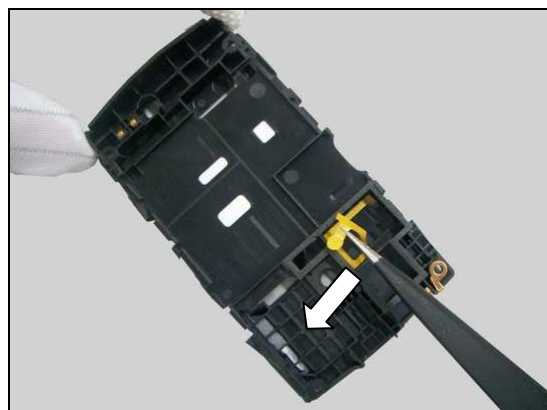
Attach a new Speaker Sponge in its cavity.



Press to make it securely attached by using the Flex Film Assembly Tool.



Peel off the protection paper.



## Replacement

### 4.13 Liquid Intrusion Indicator

**There are two Liquid Intrusion Indicators on the phone.**

#### INSPECTION

*Follow the 3.1 – 3.2 Disassembly Instructions!*

To check whether the Liquid Intrusion Indicator (1) has been activated (reddish color).

If activated:

*Follow the 3.3 – 3.6 Disassembly Instructions!*

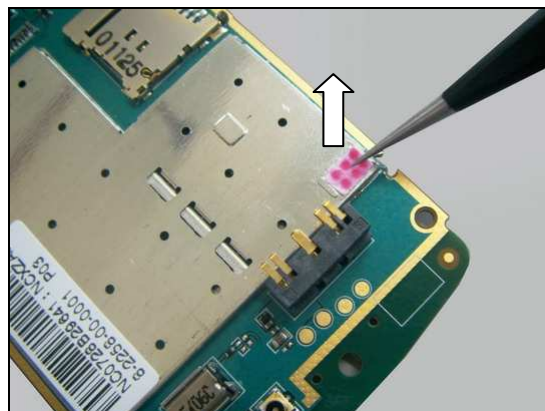
Carry out the replacement as described below.

*Follow the 5.1– 5.6 Reassembly Instructions!*



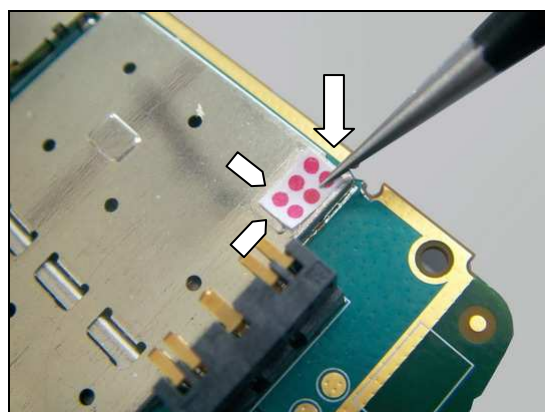
#### REMOVAL

Detach the activated Liquid Intrusion Indicator off the BB Shielding Can Lid by using the Tweezers.

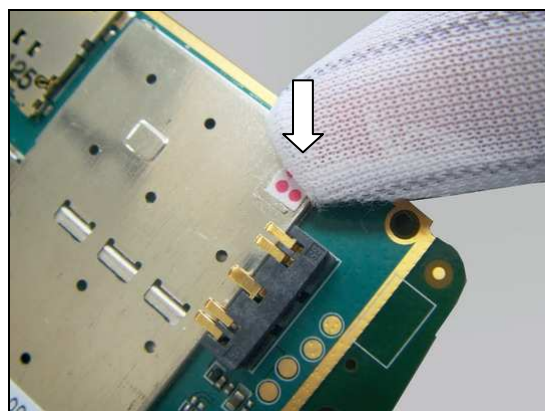


#### INSTALLATION

Attach a new Liquid Intrusion Indicator in alignment with the two guiding lines on the BB Shielding Can Lid as shown in picture.



Press to make it securely attached.







## Replacement: Liquid Intrusion Indicator

### INSPECTION

*Follow the 3.1 – 3.3 Disassembly Instructions!*

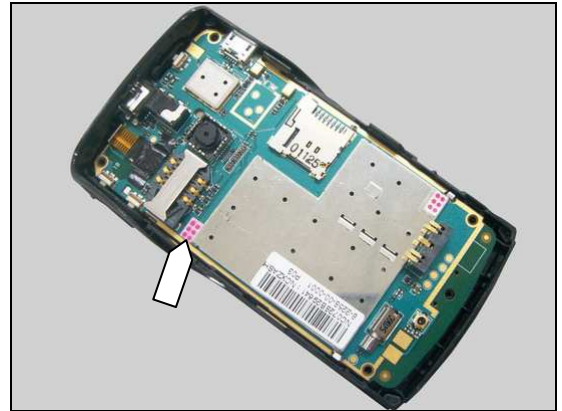
To check whether the Liquid Intrusion Indicator (2) has been activated (reddish color).

*If activated:*

*Follow the 3.4 – 3.6 Disassembly Instructions!*

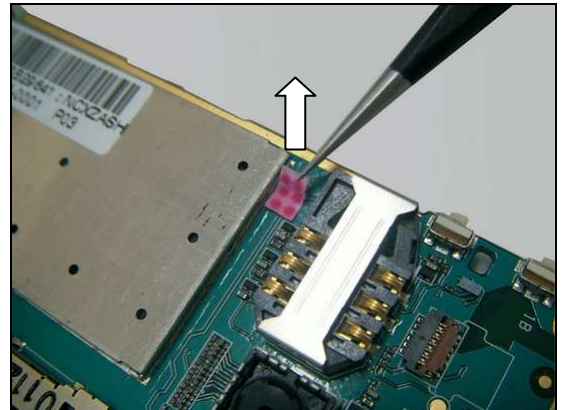
Carry out the replacement as described below.

*Follow the 5.1 – 5.6 Reassembly Instructions!*



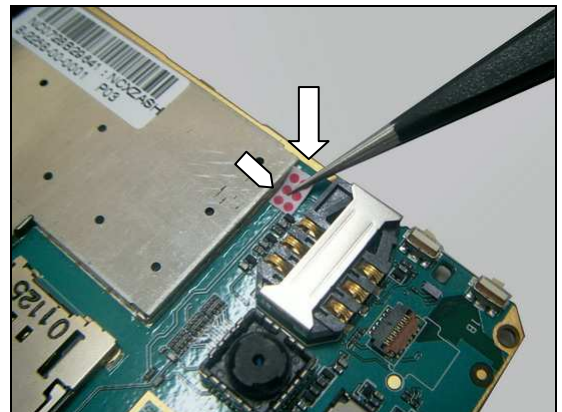
### REMOVAL

Detach the activated Liquid Intrusion Indicator from the Main PBA by using the Tweezers.

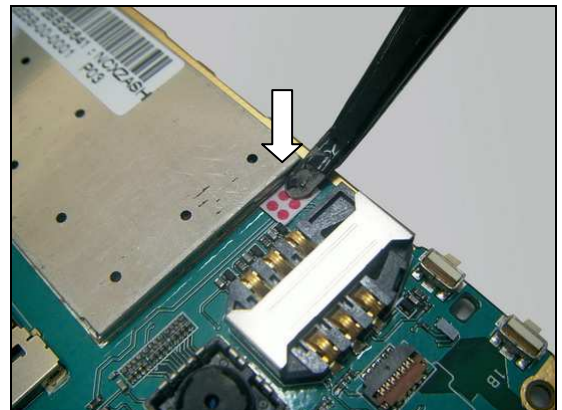


### INSTALLATION

Attach a new Liquid Intrusion Indicator in alignment with the edge of the BB Shielding Can Lid by using the Tweezers as shown in picture.



Press to secure the attachment with the Flex Film Assembly Tool.





## Replacement

### 4.14 Camera

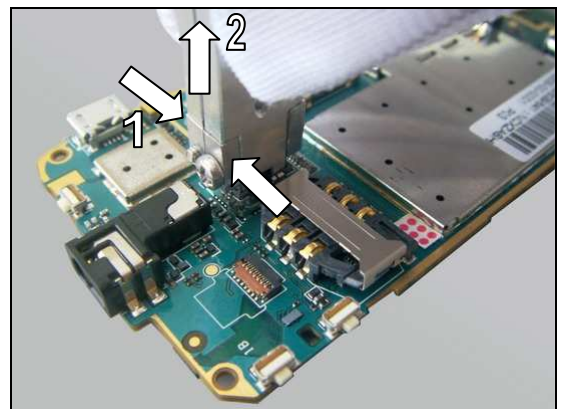
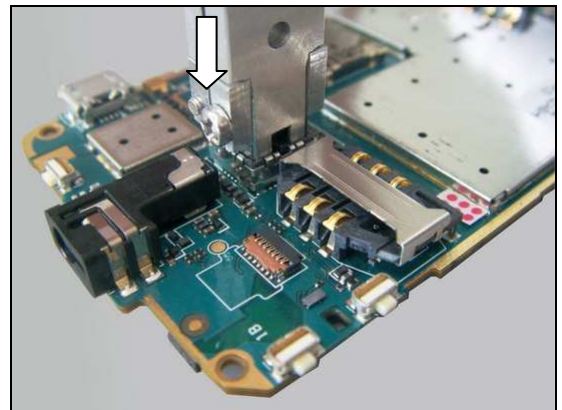
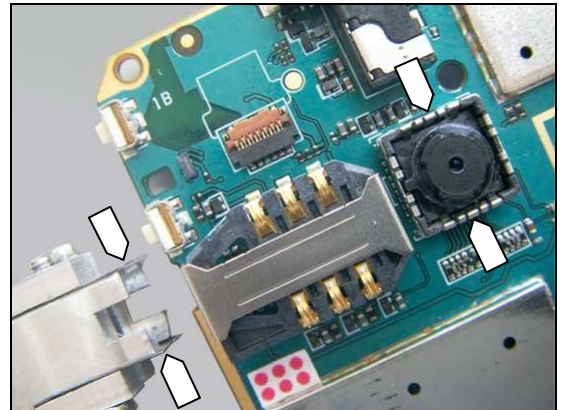
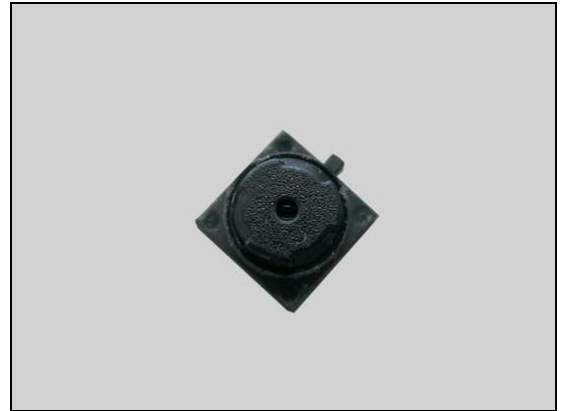
*Follow the 3.1 – 3.6 Disassembly Instructions!*  
Prepare the new Camera.  
*Follow the 5.1 – 5.6 Reassembly Instructions!*

#### REMOVAL

Align the orientation of the blades on the Camera Removal Tool in relation to the position of the camera socket.

Insert the Camera Removal Tool into the camera socket as shown in picture.

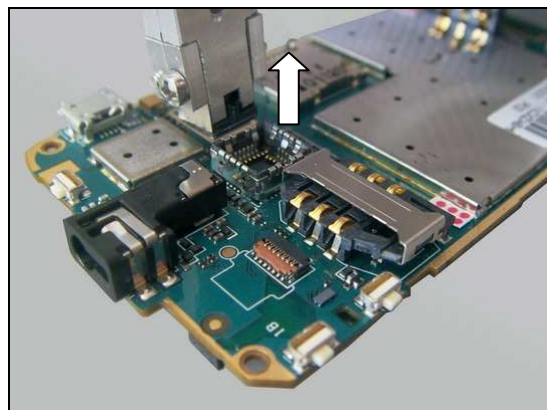
Grip (1) the Camera Removal Tool and lift (2) straight up to remove the Camera from its socket.





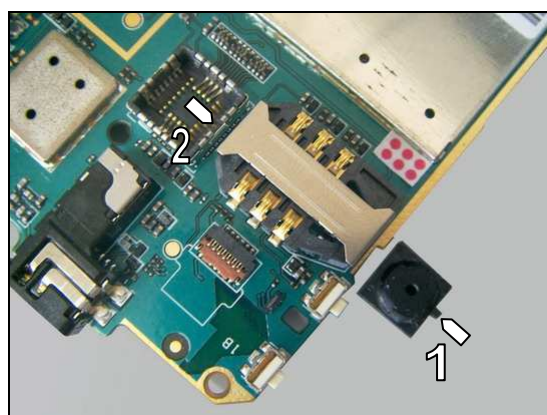
## Replacement: Camera

Remove the Camera.

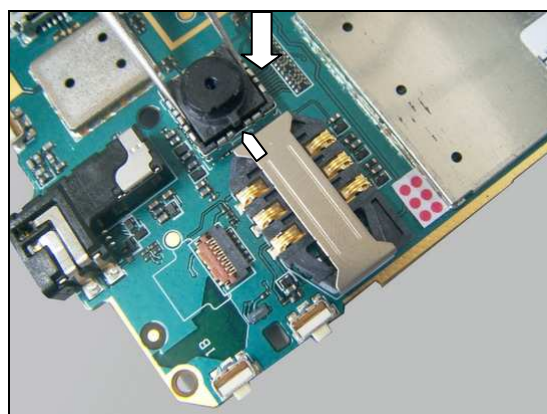


### INSTALLATION

Make sure the orientation of the Camera and its socket: camera pin (1) into socket slot (2) when installing the Camera.

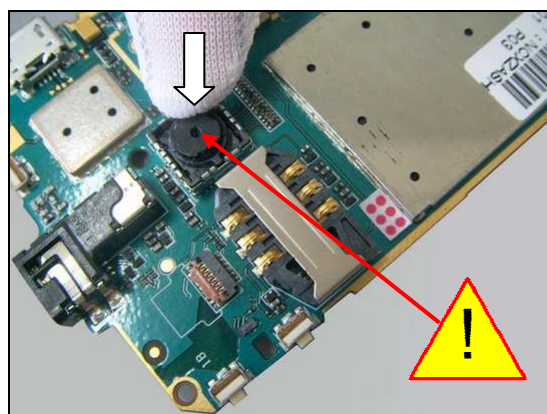


Place the Camera into the socket.



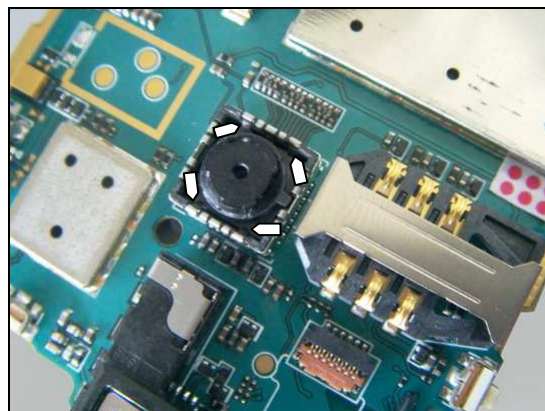
Press to secure the Camera to the bottom of the socket.

**Do not touch the lens!**



## Replacement: Camera

***Make sure the four spring pins are above the camera as pointers indicated in picture!***





## Replacement

### 4.15 Touch IC Sponge

*Follow the 3.1 – 3.5 Disassembly Instructions!*

Prepare the new Touch IC Sponge.

*Follow the 5.2 – 5.6 Reassembly Instructions!*

***Touch IC Sponge cannot be reused in case of the adhesive missing or failure!***

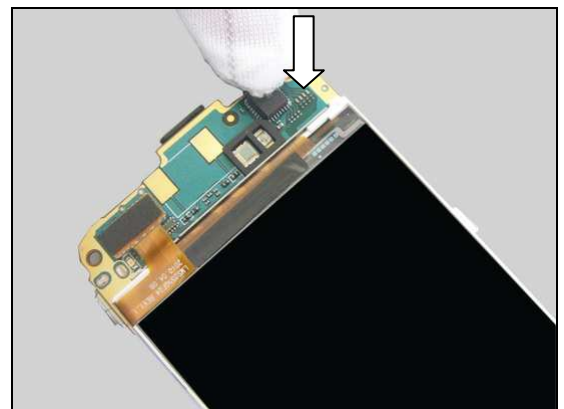
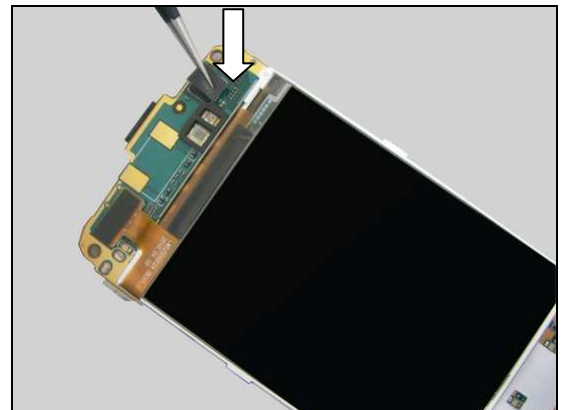
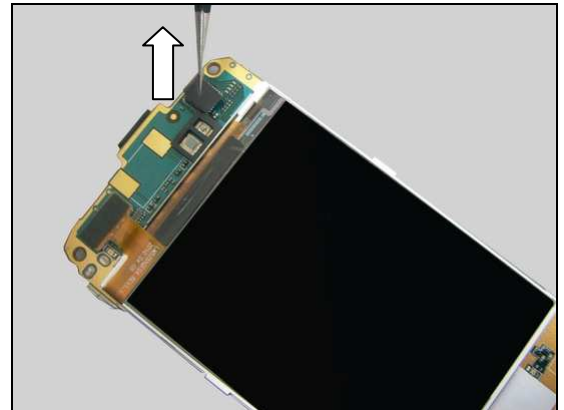
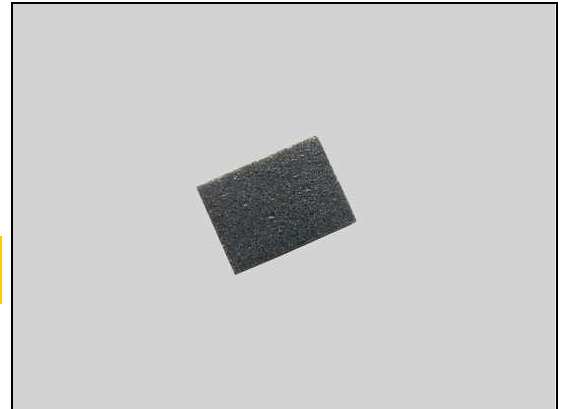
#### REMOVAL

Peel off the Touch IC Sponge from the Touch IC by using the Tweezers.

#### INSTALLATION

Attach the Touch IC Sponge in place as shown in picture.

Press to secure the attachment with finger.





## Replacement

### 4.16 Proximity Sensor Rubber

*Follow the 3.1 – 3.6 Disassembly Instructions!*

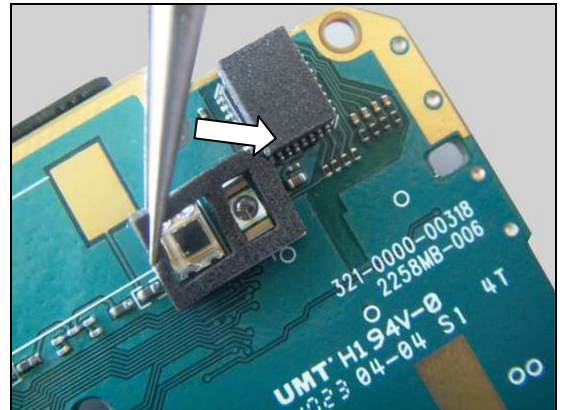
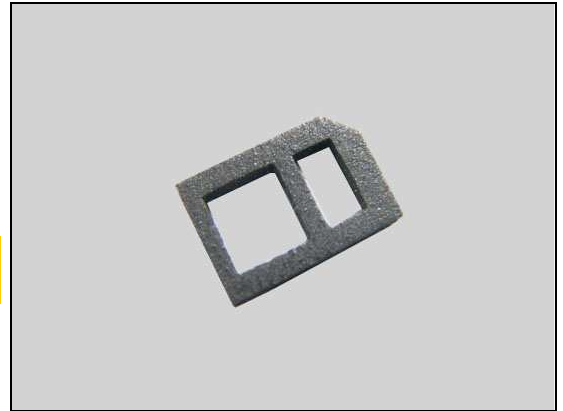
Prepare the new Proximity Sensor Rubber.

*Follow the 5.1 – 5.6 Reassembly Instructions!*

**Proximity Sensor Rubber cannot be reused in case of the adhesive missing or failure!**

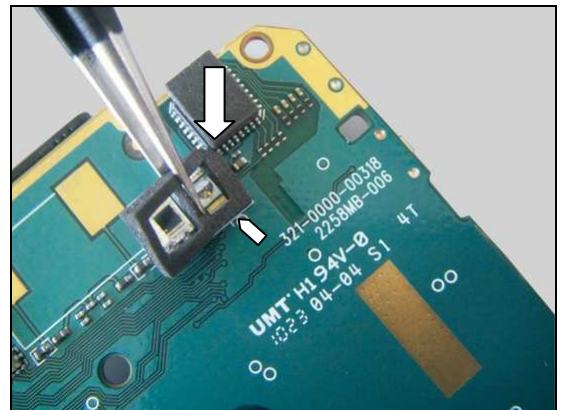
#### REMOVAL

Peel off the Proximity Sensor Rubber from the Main PBA by using the Tweezers.

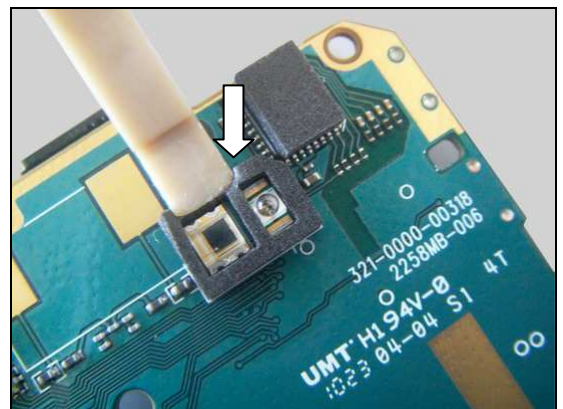


#### INSTALLATION

Attach the Proximity Sensor Rubber in alignment with the guiding lines on the Main PBA as shown in picture.



Press to secure the attachment with the Front Opening Tool.







## Replacement

### 4.17 Home Key Domesheet

*Follow the 3.1 – 3.6 Disassembly Instructions!*

Prepare the new Home Key Domesheet.

*Follow the 5.1 – 5.6 Reassembly Instructions!*

**Home Key Domesheet cannot be reused!**

#### REMOVAL

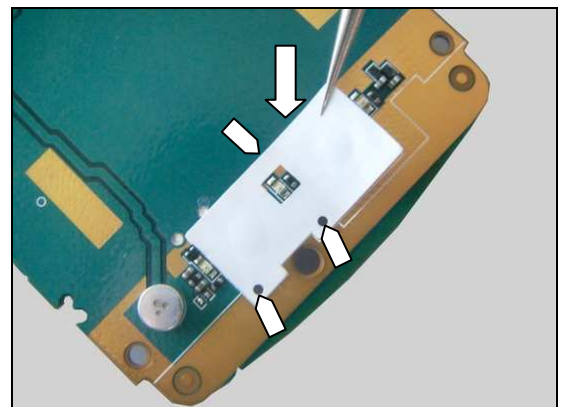
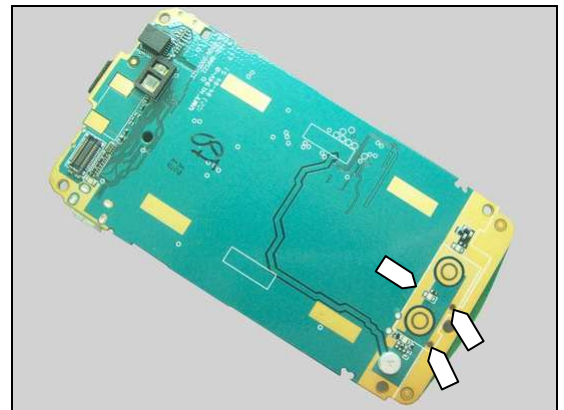
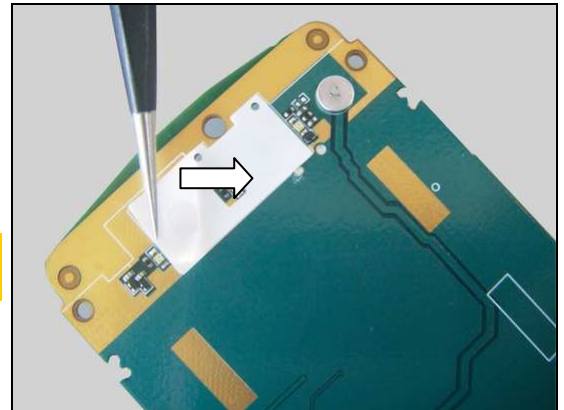
Detach the Home Key Domesheet from the Main PBA.

**Be careful not to damage the parts on the Main PBA during the operation!**

#### INSTALLATION

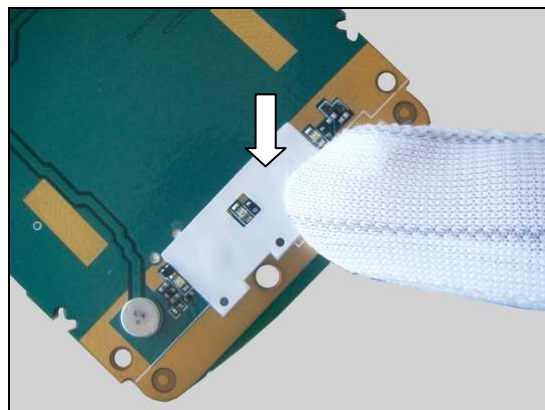
There are one printed rectangular guiding lines and two guiding holes on the Main PBA for alignment.

Attach a new Home Key Domesheet in alignment with the rectangular guiding lines and the two guiding holes as pointers indicated in picture.



## Replacement: Home Key Domesheet

Press to make it securely attached by using finger.





## Replacement

### 4.18 LCM BtB Connector Sponge

*Follow the 3.1 – 3.6 Disassembly Instructions!*

Prepare the new LCM BtB Connector Sponge.

*Follow the 5.1 – 5.6 Reassembly Instructions!*

**LCM BtB Connector Sponge cannot be reused!**

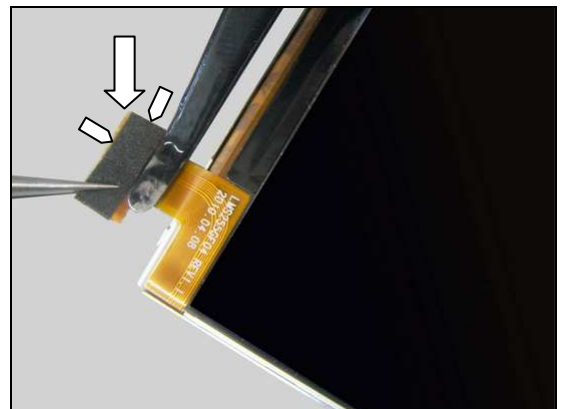
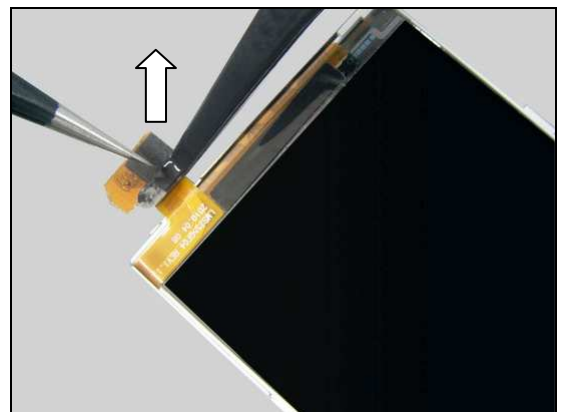
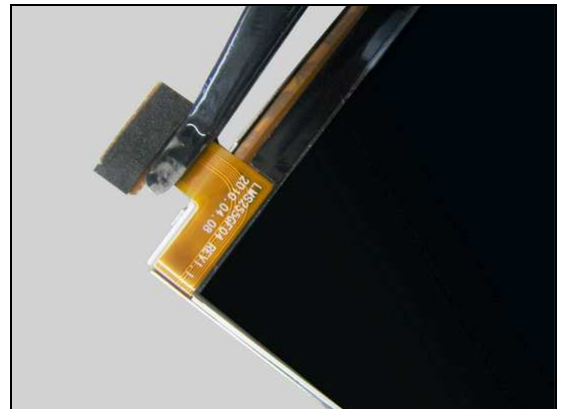
#### REMOVAL

Hold the Display FPC by using the Flex Film Assembly Tool.

Peel off the LCM BtB Connector Sponge from the Display BtB connector by using the Tweezers.

#### INSTALLATION

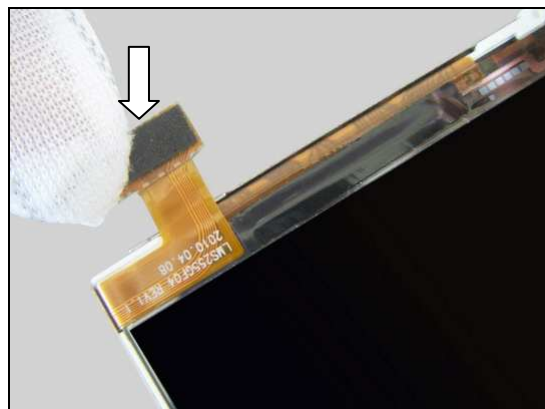
Attach the LCM BtB Connector Sponge in alignment with the two sides of the Display BtB connector as shown in picture.





## Replacement: LCM BtB Connector Sponge

Press to secure the attachment with finger.



## Replacement

### 4.19 Home Key

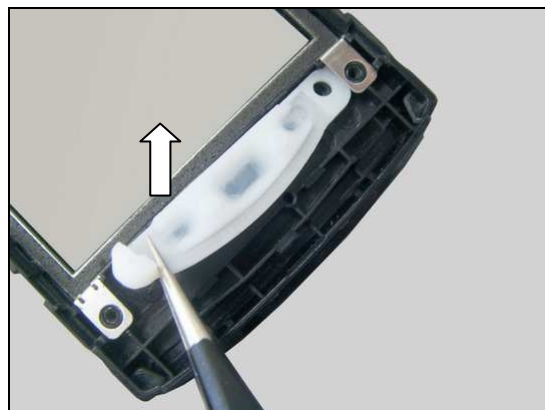
*Follow the 3.1 – 3.5 Disassembly Instructions!*

Prepare the new Home Key.

*Follow the 5.2 – 5.6 Reassembly Instructions!*

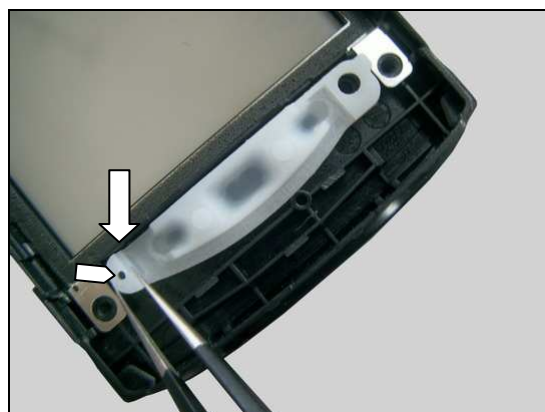
#### REMOVAL

Remove the Home key with the Tweezers.



#### INSTALLATION

Secure the guiding bolt on the Touch Front Cover Assy into the guiding hole of the Home Key as pointer indicated in picture by using the Tweezers.



Mount the rubber pin of the Home Key under the metal bracket on the Touch Front Cover Assy by using the Tweezers as pointer indicated in picture.



## Replacement: Home Key

Press the Home key to secure it into its cavity by using Flex Film Assembly Tool.



## Replacement

### 4.20 Power/Lock Key

*Follow the 3.1 – 3.5 Disassembly Instructions!*

Prepare the new Power/Lock Key.

*Follow the 5.2 – 5.6 Reassembly Instructions!*

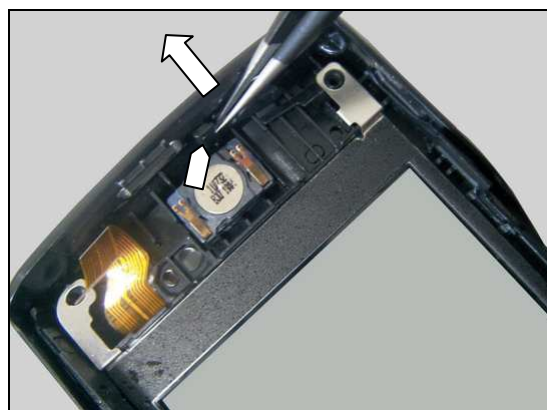
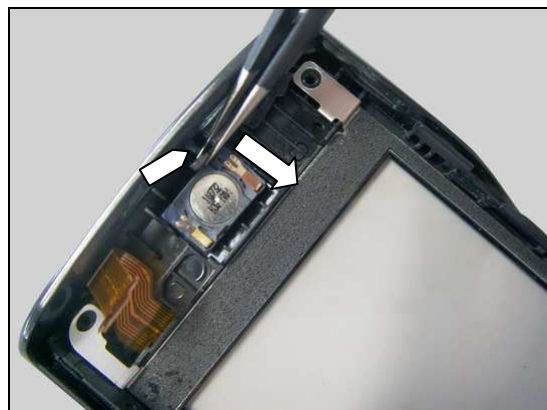
#### REMOVAL

Release the Power/Lock Key from the guiding bolt on the Touch Front Cover Assy by using the Tweezers as pointer indicated in picture.

Remove it.

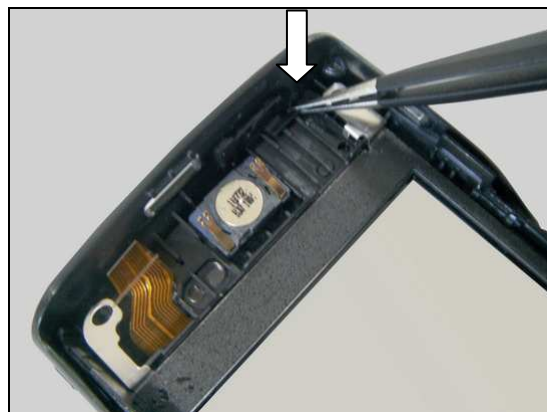
#### INSTALLATION

Secure the guiding bolt on the Touch Front Cover Assy into the guiding hole of the Power/Lock Key by using the Tweezers as pointer indicated in picture.



## Replacement: Power/Lock Key

Mount the rubber pin of the Power/Lock Key properly into its cavity by using the Tweezers as shown in picture.





## Replacement

### 4.21 Volume Key

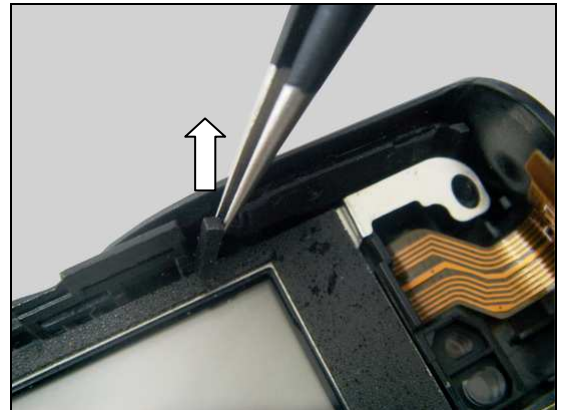
*Follow the 3.1 – 3.5 Disassembly Instructions!*

Prepare the new Volume Key.

*Follow the 5.2– 5.6 Reassembly Instructions!*

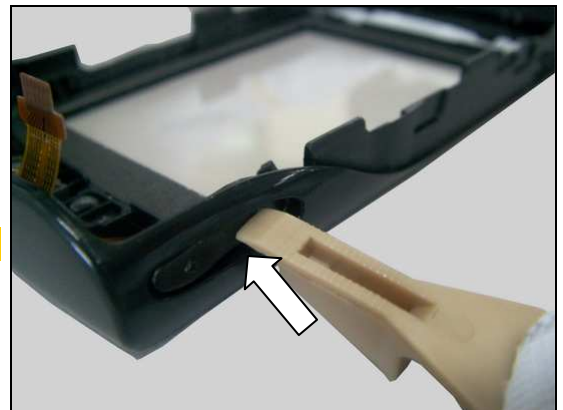
#### REMOVAL

Release the rubber pin of the Volume Key from its cavity by using the Tweezers.



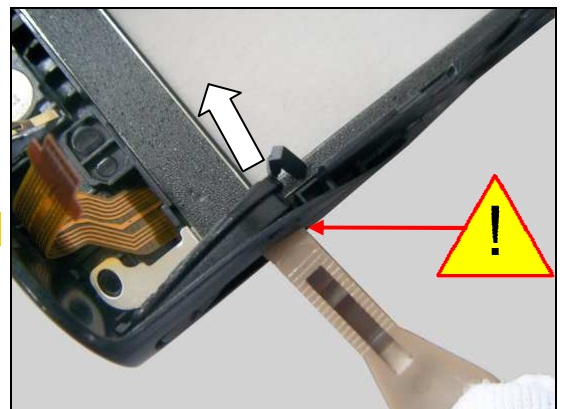
Push one end of the Volume Key from outside by using the Front Opening Tool as shown in picture.

**Be careful not to damage the Volume Key.**



Release this end of the Volume Key from its cavity.

**Be careful not to damage the Touch Front Cover Assy.**



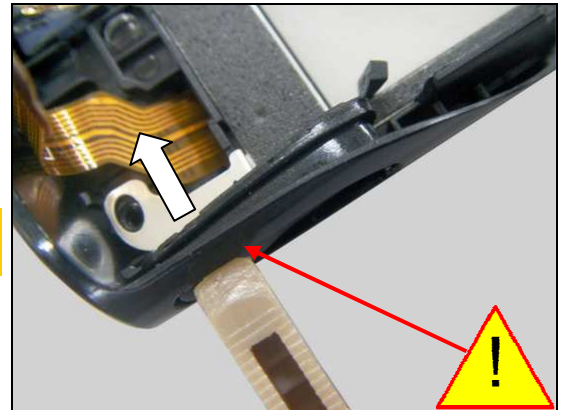




## Replacement: Volume Key

Push the other end of the Volume Key from outside by using the Front Opening Tool as shown in picture.

**Be careful not to damage the Volume Key and the Touch Front Cover Assy.**



Release the Volume Key from its cavity.

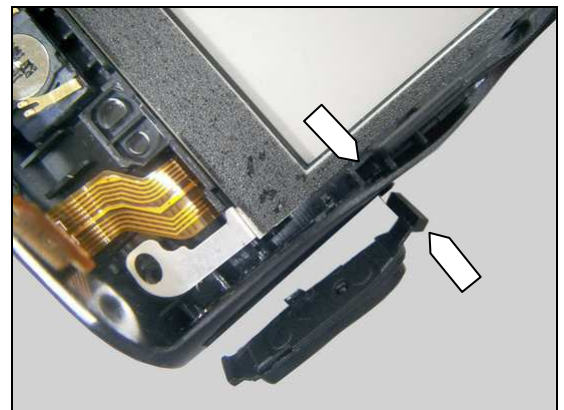


Remove it with the Tweezers.



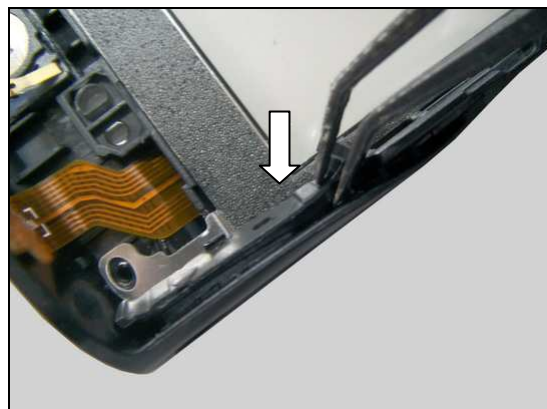
## INSTALLATION

Identify the right direction of the Volume Key by using the rubber pin and its cavity as pointers indicated in picture.



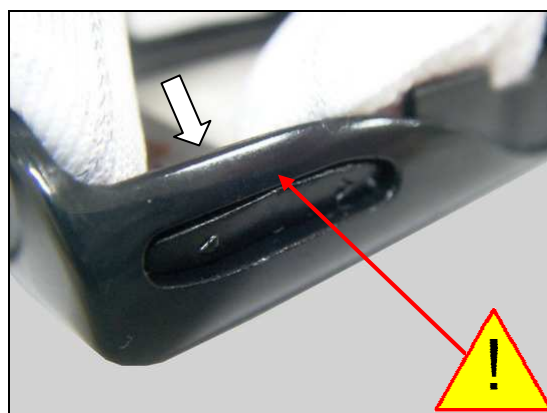
## Replacement: Volume Key

Place the Volume Key in its proper position as shown in picture.



Push out the Volume Key from inside with fingers to secure it into its cavity.

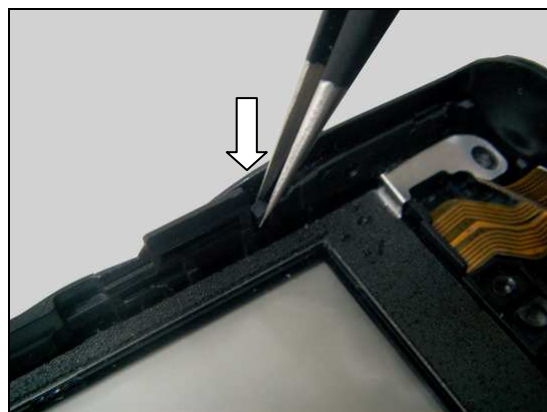
**Be careful not to damage the Touch Front Cover Assy.**



**Make sure the Volume Key is properly into its cavity as shown in picture.**



Mount the rubber pin into its cavity by using the Tweezers as shown in picture.





## Replacement

### 4.22 Ear Speaker

*Follow the 3.1 – 3.5 Disassembly Instructions!*

Prepare the new Ear Speaker.

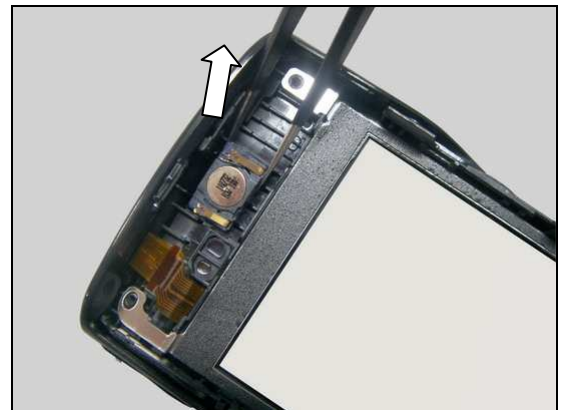
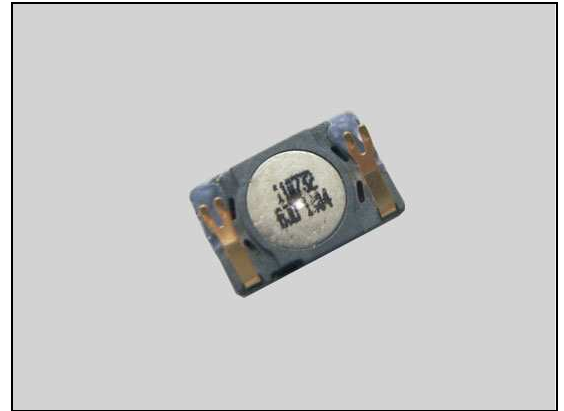
*Follow the 5.2 – 5.6 Reassembly Instructions!*

#### REMOVAL

Insert Dentist hook underneath the Ear Speaker to detach it.

Remove the Ear Speaker.

**Clean the residues of the old Ear Speaker Sponge on the Touch Front Cover Assy before installation!**



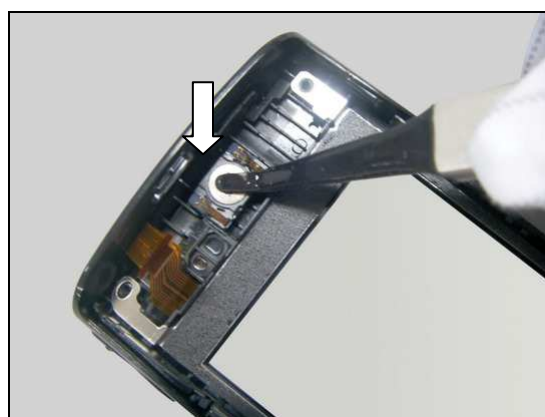
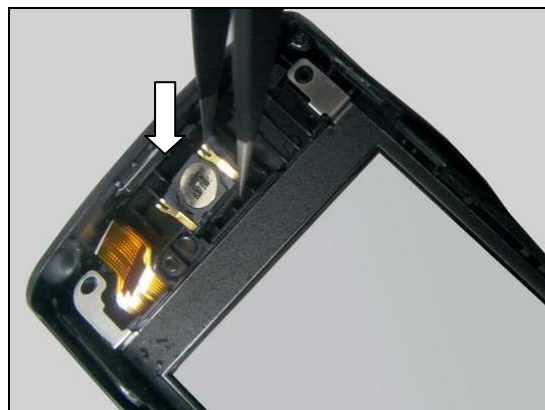
## Replacement: Ear Speaker

### INSTALLATION

Place the Ear Speaker in the right direction as shown in picture.

***The Ear Speaker contact spring pins are towards the top side of the phone as shown in picture.***

Press to make it securely attached.



## Replacement

### 4.23 Ear Speaker Sponge

*Follow the 3.1 – 3.5 Disassembly Instructions!*

*Follow the 4.22 Removal Instructions!*

*Prepare the new Ear Speaker Sponge.*

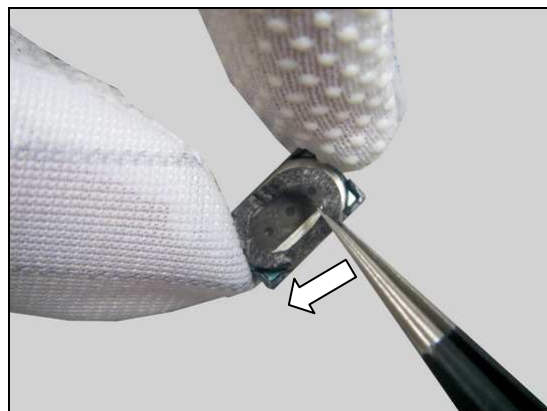
*Follow the 4.22 Installation Instructions!*

*Follow the 5.2 – 5.6 Reassembly Instructions!*

**Ear Speaker Sponge cannot be reused!**

#### REMOVAL

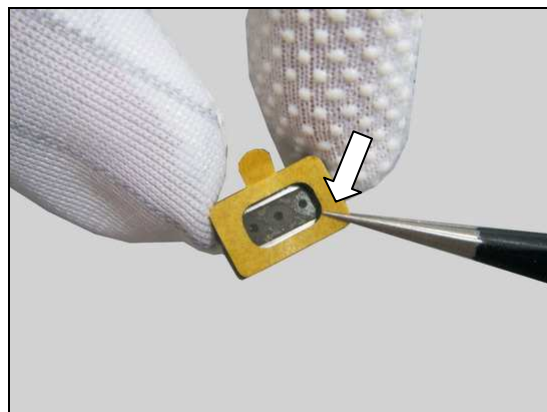
Peel off the residues of the old Ear Speaker Sponge by using the Tweezers.



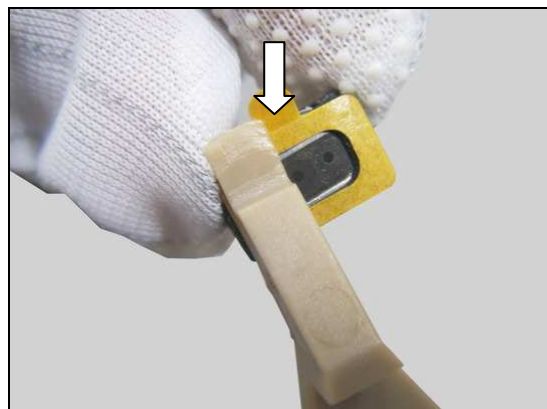
#### INSTALLATION

**Clean the residues of the old Ear Speaker Sponge on the Ear Speaker before installation!**

Attach a new Ear Speaker Sponge in the proper position as shown in picture.



Press to make it securely attached by using the Front Opening Tool.





## Replacement: Ear Speaker Sponge

Peel off the protection paper.



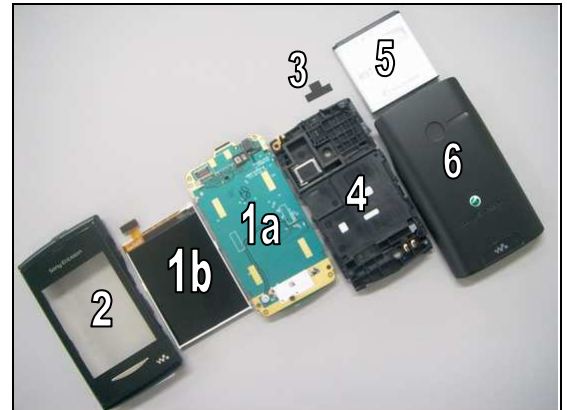




## 5 Reassembly

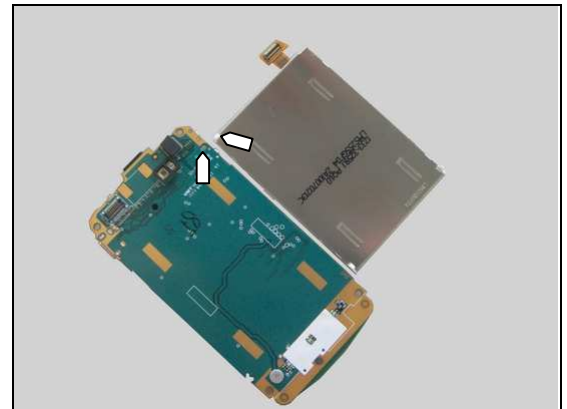
The Reassembly is done in the following order:

1. Main PBA (a) and Display (b)
2. Touch Front Cover Assy
3. Touch FPC Connector Mylar
4. Rear Cover Assy
5. Battery
6. Battery Cover

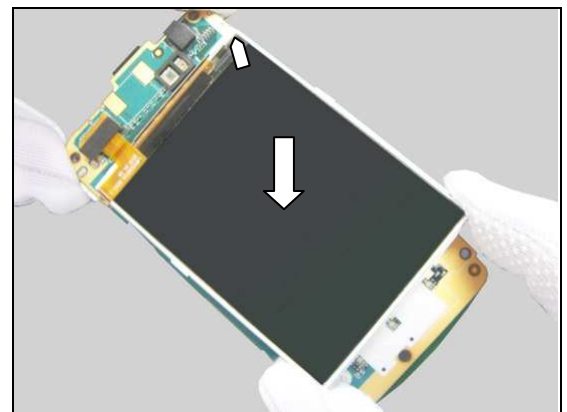


### 5.1 Main PBA and Display

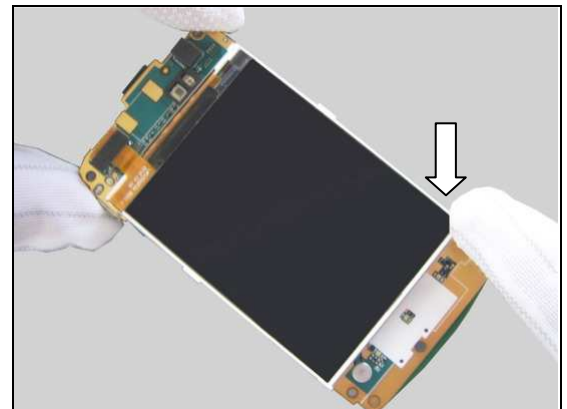
Align the guiding bolt on the Display with the guiding hole on the Main PBA as the pointers indicated in picture.



Put the guiding bolt into the guiding hole and place the Display in the proper position as shown in picture.



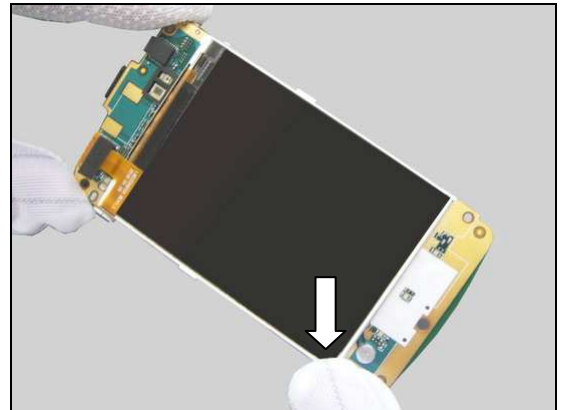
Press to snap one of the Display hooks.



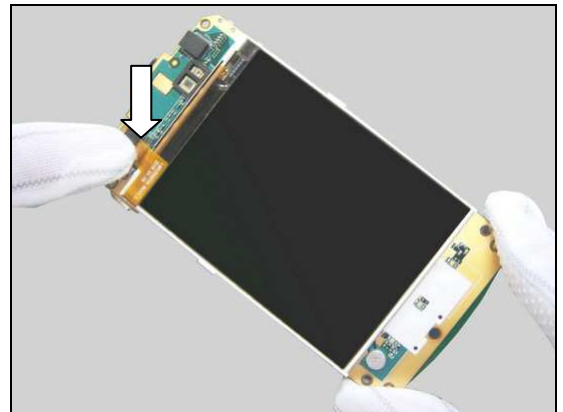


## Reassembly:

Press to snap the other Display hook.



Press to connect the Display BtB connector by using finger.



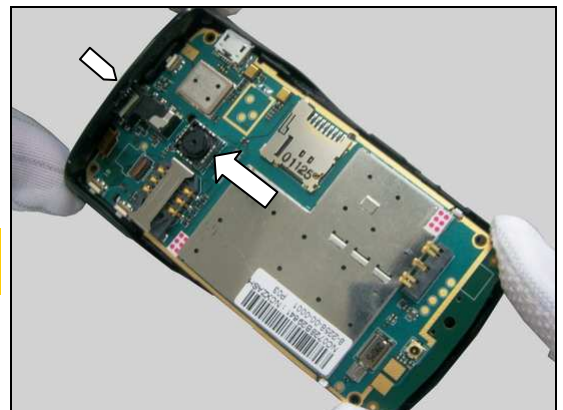
## 5.2 Touch Front Cover Assy

Prepare the two assemblies as shown in picture.



Hold the Main PBA at a slight angle and insert the top of the Main PBA into the Touch Front Cover Assy as pointer and arrow indicated in picture.

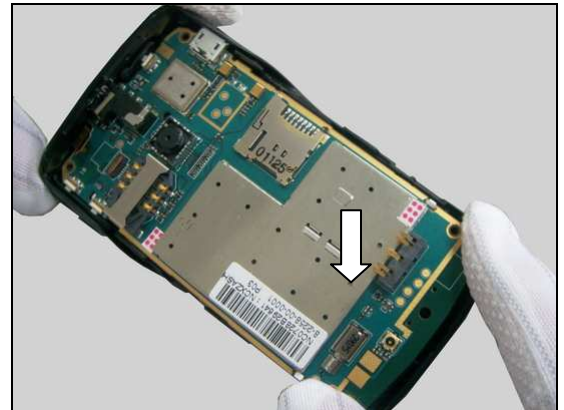
***Make sure the Audio Jack is mounted into its outlet on the Touch Front Cover Assy before next action!***





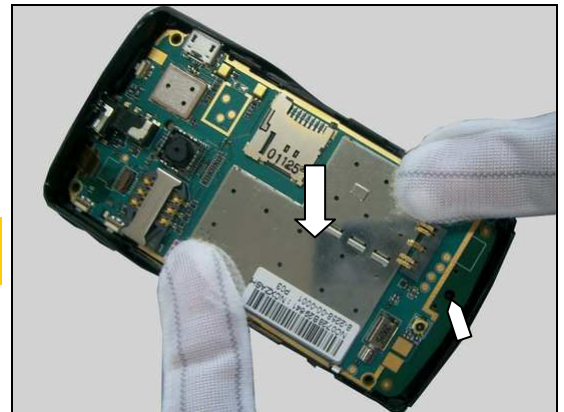
## Reassembly

Place the Main PBA into the Touch Front Cover Assy.



Press on both sides of the Main PBA to secure it into the Touch Front Cover Assy as shown in picture.

**Make sure the guiding bolt on the Touch Front Cover Assy into the guiding hole on the Main PBA!**



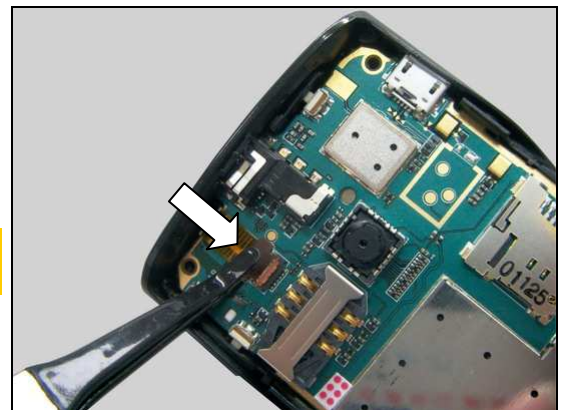
Press on the Micro USB Connector to secure it into its outlet on the Touch Front Cover Assy.

**Make sure the Volume Keys and Power/Lock Key are mounted into their proper position before next action!**



Insert the Touch FPC into the Touch FPC connector on the Main PBA by using the Flex Film Assembly Tool as shown in picture.

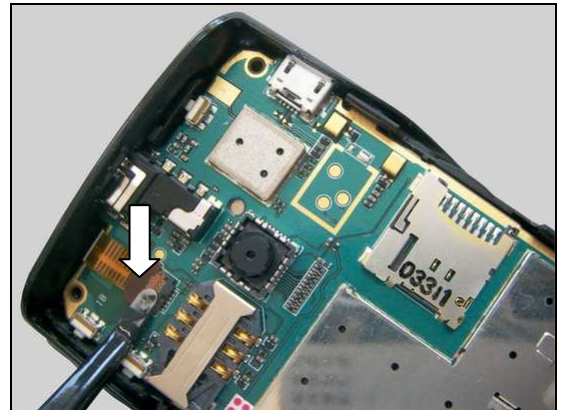
**Insert the Touch FPC to the bottom of the connector slot!**





## Reassembly

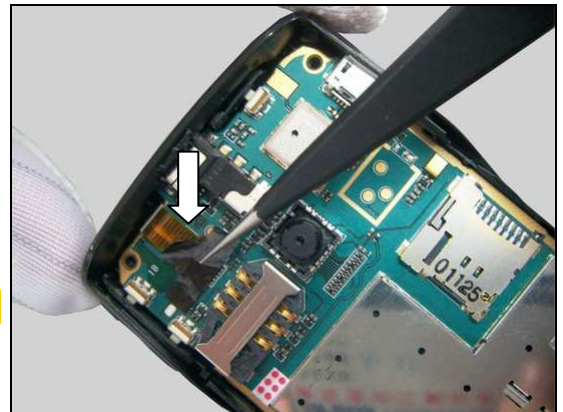
Lock the connector by using the Flex Film Assembly Tool.



### 5.3 Touch FPC Connector Mylar

Attach the Touch FPC Connector Mylar in its proper position as shown in picture.

**Install a new Touch FPC Connector Mylar!**



Press the Mylar to make it securely attached.



### 5.4 Rear Cover Assy

Hold the Rear Cover Assy at a slight angle as shown in picture.





## Reassembly

Insert the top of the Rear Cover Assy to snap the top hook as pointer indicated in picture.



Press the Rear Cover Assy to snap the two hooks by using fingers as shown in picture.



Press to snap the other two hooks by using fingers as shown in picture.



Press to snap the bottom hook by using finger as shown in picture.



## Reassembly

Tighten the four screws with a screwdriver by using Torx Bits T5 to a torque of  $11\pm1\text{Ncm}$ .



### 5.5 Battery

Insert the Battery in its cavity as shown in picture.



Press at the bottom to secure its position.



### 5.6 Battery Cover

Put the Battery Cover in its proper position as shown in picture.





## Reassembly

Push the Battery Cover as the direction of the arrow in picture to lock it.





## 6 Country of Origin Barcodes for Brazil/VIVO Labels

Below is a link to a list of countries of origin. If you are printing a Brazil or VIVO label, scan the barcode corresponding to the correct country of origin for the “Fabricado” field.





## 7 Revision History

Rev.	Date	Changes / Comments
1	2010-Nov-08	Initial release